

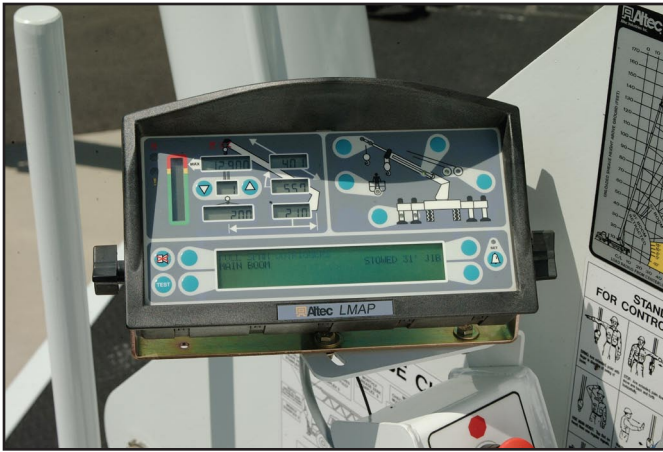
# **Ateco AC23-95B**

## **Hydraulic Telescopic Crane**



- 23.5 Ton (21.3t) Maximum Lifting Capacity
- 95 ft (29 m) 4-Section Boom
- 3 Position Out-and-Down Outriggers
- Walk Through Control Stations
- Typical Finished Weight of 42,000 lbs (19,051 kg)





*Altec LMAP System*

## RECOMMENDED FEATURES

- Wheel Chocks
- Outrigger Pads
- Fall Protection System (with platform)
- Radio Remote Control (with platform)
- Platform Test Lift Package (with platform)

## OPTIONS

- 1-Piece 26 ft (7.9 m) Jib
- 2-Piece 44 ft (13.4 m) jib, 26 ft (13.4 m) Retracted
- 2-Man Steel Platform
- 370 Degree Non-Continuous Rotation
- Continuous Rotation
- 12,000 lb (5,443 kg) 2 Speed Winch
- Hydraulic Tool Circuit at Tail Shelf
- Hydraulic Tool Circuit at Boom Tip
- Rotation Resistant Wire Rope
- Winch Control at Load Hook Stow Point
- Hydraulic Oil Cooling System

## STANDARD SAFETY FEATURES

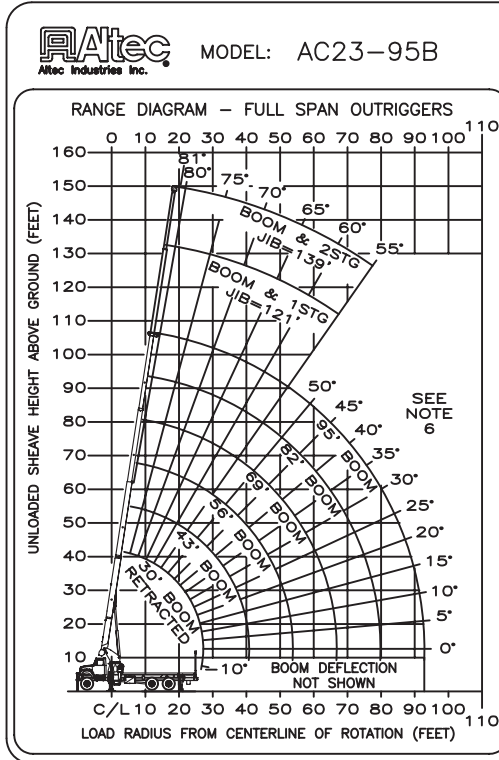
- Altec LMAP (Load Moment & Area Protection) System
  - Rated Capacity Limiter
  - Displays: Boom Length, Boom Angle, Load on Hook, Percent of Rated Capacity
  - Electronic Working Area Definition
  - Operator Defined Audible Alarm Set-Points for Boom Angle, Length and Rotational Position
- Outrigger Boom Interlock System
- Outrigger Motion Alarm
- Back-Up Alarm
- Emergency Stop at Operator Controls
- Winch Drum Rotation Indicator
- Anti-Two Block Device
- Front Bumper Outrigger
- Walk-Through Control Stations

## CRANE SPECIFICATIONS

- 47,000 lb (21,319 kg) Maximum Lifting Capacity
- 95 ft (29 m) 4-Section Boom
- 105 ft (32 m) Maximum Sheave Height
- Stowed Travel Height of 13.25 ft (4.04 m)
- Vehicle Travel Length of 39.9 ft (12.1 m)
- 3 Position Out-and-Down Outriggers
  - Full Span 18.5 ft (5.6 m)
  - Mid Span 14 ft (4.3 m)
  - Short Span 9 ft (2.7 m)
- Hydraulic Pilot-Operated Control System
- 12,000 lb (5,443 kg) Winch w/ Burst of Speed

UNIT		RECOMMENDED CHASSIS DIM				MINIMUM RECOMMENDED CHASSIS SPECIFICATION				
Model	Rear Axle	CT (in)	WB (in)	AF (in)	AS (in)	Front Axle Rating (lbs)	Rear Axle Rating (lbs)	GVWR (lbs)	Frame Sec Modulus (in <sup>3</sup> )	Frame RBM (in-lb)
AC23	Tandem	193	262	127	54	16,000	34,000	50,000	21.4	2,354,000

# Altec AC23-95B Capacities



BOOM LOAD CAPACITIES IN LBS. WITH FULL SPAN OUTRIGGERS

LOAD RADIUS (FT)	30 FT BOOM	43 FT BOOM	56 FT BOOM	69 FT BOOM	82 FT BOOM	95 FT BOOM
5	47000					
8	36800	17600				
10	30900	17800	17500			
12	26100	18000	17600			
14	22200	18200	17700	17400		
16	19100	18500	17900	16100	13900	
18	17600	18000	18100	14900	12900	10000
20	15400	15800	16000	13900	12000	79 10000
25	11400	11900	12100	11600	10100	76 8800
30		9300	9500	9700	8300	73 7600
35		7400	7600	7800	65 7000	70 6400
40			6100	6250	61 6100	66 5500
45			4800	4950	57 5050	63 4800
50			3800	4000	52 4100	59 4150
55				3200	47 3300	55 3400
60				2600	42 2700	51 2750
65				2100	36 2200	47 2250
70					29 1750	42 1850
75					20 1400	37 1500
80						32 1150
85						24 900
90						14 675
0	8000	4900	3100	2000	1150	575
	825	550	425	350	300	250

NOTE: RATINGS ABOVE THE HEAVY LINE ARE BASED ON STRUCTURAL COMPETENCE AND NOT ON MACHINE STABILITY.

AREA OF OPERATION

DO NOT WORK IN THIS AREA WITHOUT FRONT BUMPER OUTRIGGER DEPLOYED

DEDUCTIONS FROM RATED LOADS FOR HANDLING DEVICES

OVERHAUL BALL: 180 LBS

1-SHEAVE LOADBLOCK: 230 LBS

2-SHEAVE LOADBLOCK: 365 LBS

90° BOOM CAPACITIES

STOWED JIB LOAD DEDUCTIONS

970162004 C (SHEET 1)

DEPLOYED JIB LOAD CAPACITIES (LBS) FOR ALL BOOM LENGTHS

JIB CAPACITIES ARE FOR FULL SPAN OUTRIGGERS (18 FT 6 IN CENTER TO CENTER)

LOADED BOOM ANGLE	55° *	60°	65°	70°	75°	80°
RETRACTED 26 FT JIB	775	1450	2250	3100	4100	4100
EXTENDED 44 FT JIB	550	1125	1550	2050	2550	2550

\* DO NOT OPERATE JIB BELOW THIS ANGLE UNLESS BOOM IS FULLY RETRACTED. SEE NOTE 6.

OPERATOR AIDS MUST BE IN GOOD OPERATING CONDITION BEFORE OPERATING CRANE. REFER TO OWNERS MANUAL.		1 PART LOAD LINE	2 PART LOAD LINE	3 PART LOAD LINE	4 PART LOAD LINE	5 PART LOAD LINE	6 PART LOAD LINE
KEEP AT LEAST 3 WRAPS OF LOADLINE ON DRUM AT ALL TIMES.							
USE ONLY 9/16" (1.47 cm) DIAMETER IWRC OR ROTATION RESISTANT WIRE ROPE WITH 37,000 LBS (16,782 KG) MIN. BREAKING STRENGTH ON THIS MACHINE.		LOADS UP TO	LOADS UP TO	LOADS UP TO	LOADS UP TO	LOADS UP TO	LOADS UP TO
IWRC XXIP WIRE ROPE (LBS)		10,571 lbs	21,142 lbs	31,713 lbs	42,284 lbs	52,855 lbs	60,000 lbs
IWRC XXIP WIRE ROPE (KG)		4,795 kg	9,590 kg	14,385 kg	19,180 kg	23,975 kg	27,216 kg
ROTATION RESISTANT WIRE ROPE (LBS)		7,400 lbs	14,800 lbs	22,200 lbs	29,600 lbs	37,000 lbs	44,400 lbs
ROTATION RESISTANT WIRE ROPE (KG)		3,356 kg	6,713 kg	10,069 kg	13,426 kg	16,783 kg	20,140 kg
MAXIMUM BOOM LENGTH AT MAXIMUM ELEVATION WITH RIGGING SHOWN TO REACH THE GROUND (FT)		103 FT BOOM + 44 FT JIB	103 FT BOOM	74 FT BOOM	56 FT BOOM	45 FT BOOM	37 FT BOOM
MAXIMUM BOOM LENGTH AT MAXIMUM ELEVATION WITH RIGGING SHOWN TO REACH THE GROUND (M)		32 m BOOM + 13 m JIB	32 m BOOM	23 m BOOM	17 m BOOM	13 m BOOM	11 m BOOM
WINCH		LIFTS AND SPEEDS (ENGLISH UNITS)					
9/16" (1.4cm) DIAMETER IWRC XXIP CABLE SUPPLIED	STANDARD PLANETARY WINCH HIGH SPEED	4,620 LBS. 249 FT/MIN	9,240 LBS. 124 FT/MIN	13,860 LBS. 83 FT/MIN	18,480 LBS. 62 FT/MIN	23,100 LBS. 50 FT/MIN	27,720 LBS. 42 FT/MIN
	STANDARD PLANETARY WINCH LOW SPEED	9,880 LBS. 115 FT/MIN	19,760 LBS. 58 FT/MIN	29,640 LBS. 38 FT/MIN	39,520 LBS. 29 FT/MIN	49,400 LBS. 23 FT/MIN	59,280 LBS. 19 FT/MIN
WINCH		LIFTS AND SPEEDS (METRIC UNITS)					
9/16" (1.4cm) DIAMETER IWRC XXIP CABLE SUPPLIED	STANDARD PLANETARY WINCH HIGH SPEED	2,096 kg 1.26 m/s	4,272 kg .63 m/s	6,287 kg .42 m/s	8,382 kg .37 m/s	10,477 kg .254 m/s	12,573 kg .21 m/s
	STANDARD PLANETARY WINCH LOW SPEED	4,481 kg .58 m/s	8,963 kg .30 m/s	13,444 kg .19 m/s	17,925 kg .15 m/s	22,407 kg .12 m/s	26,888 kg .09 m/s
ALL WINCH PULLS AND SPEEDS IN THIS CHART ARE SHOWN ON THE 3RD LAYER. WINCH LINE PULLS WOULD INCREASE ON THE FIRST AND SECOND LAYERS. WINCH LINE SPEED WOULD DECREASE ON THE FIRST AND SECOND LAYERS. WINCH LINE PULLS MAY BE LIMITED BY THE WINCH CAPACITY OF 8,390 LBS (3,806 KG) FULL DRUM OR ANSI CABLE SAFETY LIMITS SHOWN IN CHART FOR IWRC XXIP AND ROTATION RESISTANT WIRE ROPES.							

## Winch Specifications



Altec Cranes are supported by service centers and over 115 mobile service technicians positioned across North America, seven days a week, 24 hours a day.

**United States:**

Alabama Service Center  
 1730 Vanderbilt Road  
 Birmingham, AL 35234

Arizona Service Center  
 2420 South 16th Avenue  
 Phoenix, AZ 85007

California Service Center (Northern)  
 325 Industrial Way  
 Dixon, CA 95620

California Service Center (Southern)  
 2882 Pomona Boulevard  
 Pomona, CA 91766

Colorado Service Center  
 641 Telluride Street  
 Aurora, CO 80011

Florida Service Center  
 2570 Old Okeechobee Road  
 West Palm Beach, FL 33409

Georgia Service Center  
 287 First Street  
 Forest Park, GA 30297

Indiana Service Center  
 5201 West 84th Street  
 Indianapolis, IN 46268

Kentucky Service Center  
 200 Altec Drive  
 Elizabethtown, KY 42701

Maryland Service Center  
 1434 Hughes Ford Road  
 Frederick, MD 21701

Massachusetts Service Center  
 28 Wales Street  
 Millbury, MA 01527

Missouri Service Center  
 2106 S. Riverside Road  
 St. Joseph, MO 64507

North Carolina Service Center  
 1550 Aerial Avenue  
 Creedmoor, NC 27522

Ohio Service Center  
 1236 Township Road 1175  
 Ashland, OH 44805

Oregon Service Center  
 13817 NE Sandy Boulevard  
 Portland, OR 97230

Pennsylvania Service Center  
 250 Laird Street  
 Plains, PA 18705

Texas Service Center  
 1001 Solon Road  
 Waxahachie, TX 75156

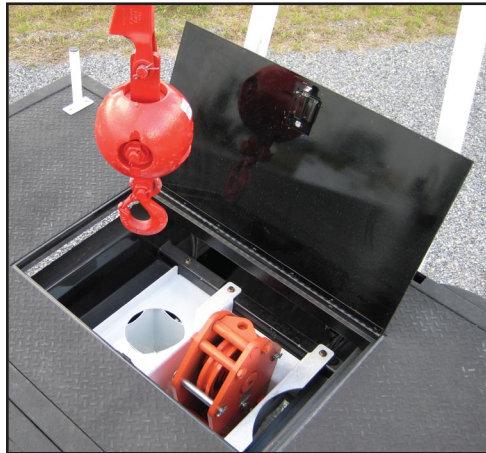
Virginia Service Center  
 325 South Center Drive  
 Daleville, VA 24083

**Canada:**

British Columbia Service Center  
 12352 84th Avenue  
 Surrey, BC V3W 0J5

Manitoba Service Center  
 57 Durand Road  
 Winnipeg, Manitoba R2J 3T1

Ontario Service Center  
 831 Nipissing Road  
 Milton, Ontario L9T 4Z4



*Optional Recessed Load Block and Ball Storage*



*Walk Through Control Stations*

**Altec Industries, Inc.**

325 South Center Drive  
 Daleville, VA 24083  
 1-540-992-5300